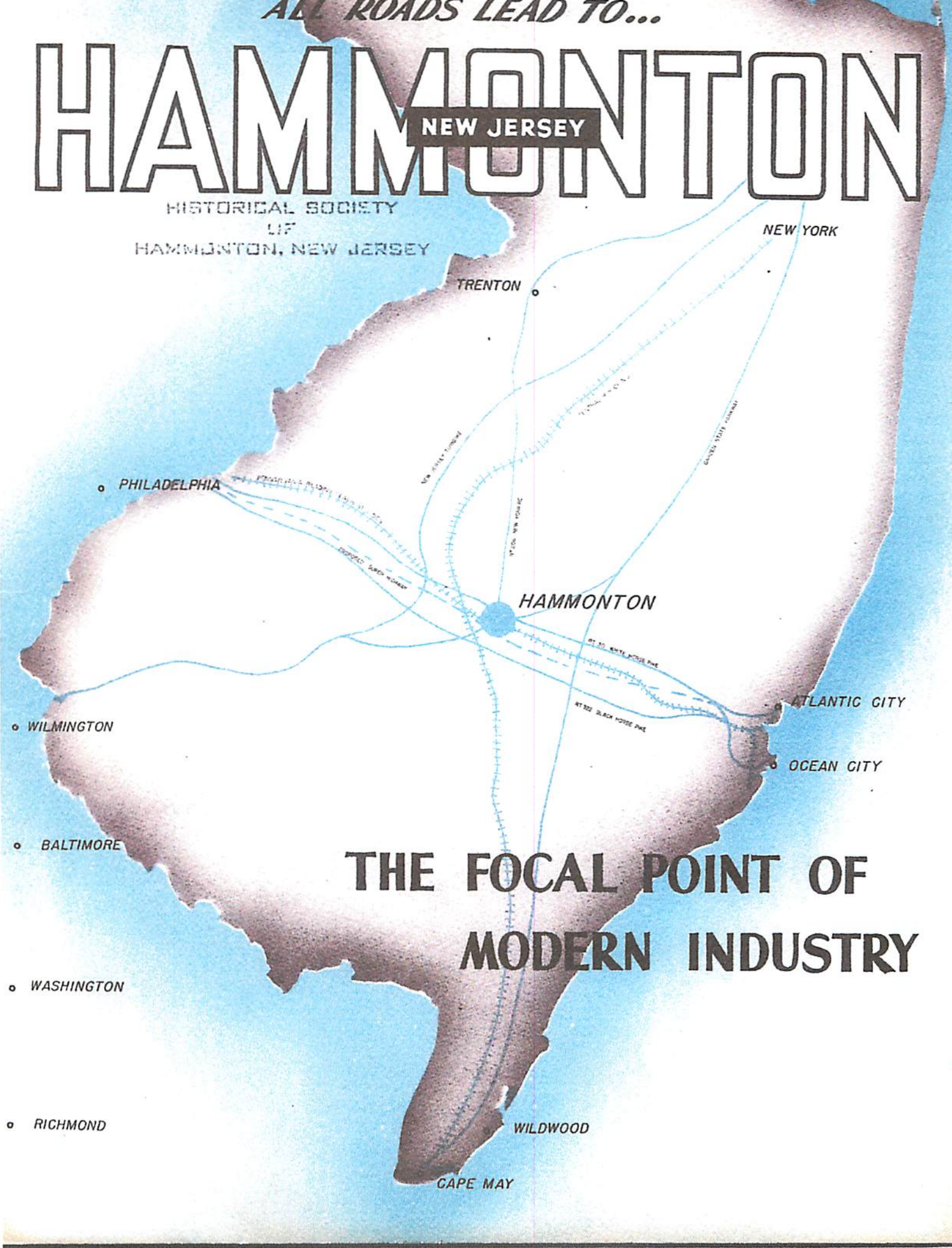


ALL ROADS LEAD TO...

# HAMMONTON

NEW JERSEY

HISTORICAL SOCIETY  
LIF  
HAMMONTON, NEW JERSEY



NEW YORK

TRENTON

PHILADELPHIA

HAMMONTON

ATLANTIC CITY

WILMINGTON

OCEAN CITY

BALTIMORE

## THE FOCAL POINT OF MODERN INDUSTRY

WASHINGTON

RICHMOND

WILDWOOD

CAPE MAY

# HAMMONTON

SITUATED IN THE CENTER

## the city of progress

### The New Jersey Turnpike

Connecting Hammonton with three states, via ultra modern highway facilities. Pictured here is the New York Skyline, only 90 minutes away from Hammonton.



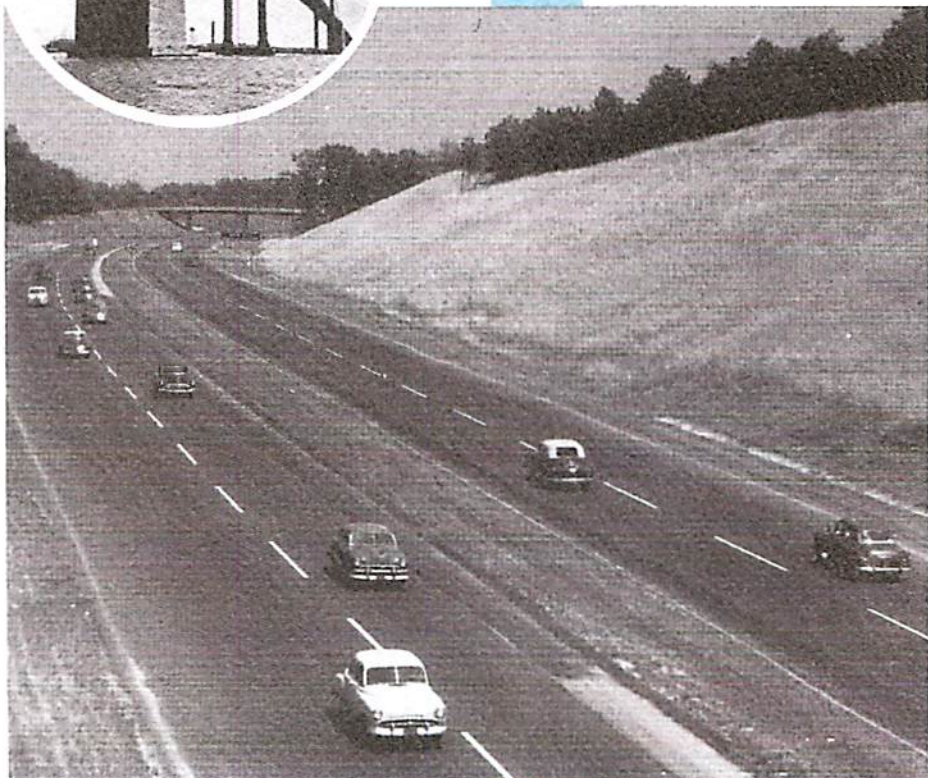
### Delaware Memorial Bridge

Direct route to Baltimore, Washington and Florida.



### The Garden State Parkway

An invitation in itself, to explore the exciting and beautiful areas surrounding Hammonton. One of three super highways connecting Hammonton with the great New York and New Jersey markets.



1920-7  
1957

OF THE FINEST HIGHWAY SYSTEM IN THE NATION . . .

# WELCOMES YOU !

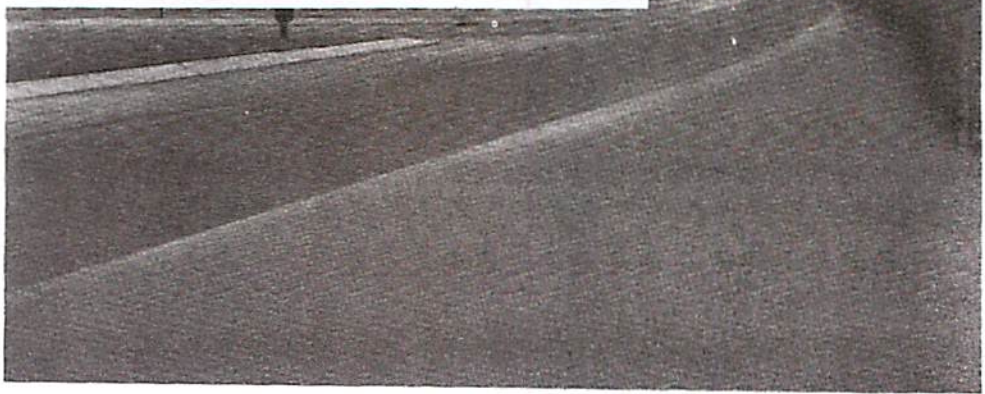
## The Famed Horses -

White and Black Horse Pikes run through Hammonton . . direct route to Philadelphia and Atlantic City markets.



## The Trenton Rd. Route 206 -

Leading directly from Hammonton to State's Capitol and through to New York.



# The City of HAMMONTON

## Size

OVER 40 SQ. MILES

Hammonton, the Hub of South Jersey, is ideally situated on the White Horse Pike, halfway between Philadelphia and Atlantic City, with a direct route to New York via the New Jersey Turnpike and the New Jersey Parkway. Easily accessible to the New Jersey Memorial Bridge connecting with highways to Wilmington, Baltimore, Washington, and the south.

Comprises an area of over 40 square miles giving ample room for select industrial sites interspersed with successful farming operations. With suitable nearby ground of approximately 15,000 acres are available for industrial purposes.

## Population

32,000

Hammonton was incorporated in 1866 with a population of 1500. Today we have in excess of 14,000 people while in Greater Hammonton we have over 32,000 people.

## Market

1/3 OF THE NATION

Hammonton is famous for its agricultural products and fruits. Millions of dollars worth of these products are delivered to Philadelphia, New York, New England, Baltimore and Washington each year. Hammonton is within overnight trucking service to over one-third of the Nation's population. Over thirty industries use the same media to deliver their products, such as Men's and Ladies Clothes, Glass, Overhead Doors, Cookies, Beer, Chemicals, Envelopes, etc. to the same one-third of the Nation.

## Railroads

TO ANY POINT  
IN THE NATION

In addition to the various highways intersecting Hammonton we have two railroads serving this area. The Pennsylvania and the Central Railroad of New Jersey. The Pennsylvania R.R. Main Line between Philadelphia and Atlantic City passes through Hammonton and offers unexcelled service, both freight and passenger. Fast trains deliver passengers to Philadelphia, or to Atlantic City, within thirty (30) minutes.

## Trucking

FINEST ROAD  
SYSTEM, INVITES  
ALL COMPANIES

Practically every carrier serving the Eastern Seaboard and South Jersey passes through Hammonton affording overnight deliveries from any Metropolitan area. One of the largest (Highway Transportation), has a terminal building on the main street.

## Airports

20 MINUTES FROM  
WORLD WIDE  
TERMINAL

Several nearby Airports are available for private planes and the terminal of the Eastern Airlines and the Allegheny airline is at Pomona, less than twenty (20) minutes drive from Hammonton. Freight and passengers to anywhere in the World are handled at this Airport.

## Bus Service

COMPLETE TO  
ALL POINTS

All busses travelling between Philadelphia and Atlantic City pass through Hammonton giving our residents hourly service to each place during the Winter and half hour service all Summer. A direct bus service from Baltimore and Wilmington to New York City, using the New Jersey Turnpike passes through Hammonton.

## Labor Supply

ABUNDANT MALE  
HELP AVAILABLE

There is an abundance of labor available, especially male, in the non skilled and semi-skilled class. Due to the fact that many of our present clothing industries employ only females, we have a surplus of males many of whom now commute to Camden and other industrial centers but who would naturally prefer to work at home.

## Government

BENEFICIAL  
TO ALL

Hammonton has a Councilmanic form of Government with a Mayor and six Councilmen. All working for what is best for the greatest number of our people.

**Taxes**  
INDUSTRY  
CONSIDERED

Industry enjoys a very favorable consideration where taxes are concerned. The common practice is to use as a basis for tax purposes 12% of the appraised value of the Buildings.

**Present Industries**  
CONTENTED IN  
ALL FIELDS

As mentioned before, we have fifteen (15) clothing factories, the largest of which is the Wm. B. Kessler Co., manufacturers of the nationally distributed Hammonton Park Suits for men. We have nationally known industries such as Raynor Door Co. (branches in Springfield and Dixon, Illinois), Deer Park Baking Co. (branches in St. Louis and Los Angeles), Kerr Concrete Pipe Co. (branch in East Paterson, N. J.), Alliance Clay Products (one of seven such plants with headquarters in Alliance, Ohio). A Brewery making Holland Beer for distribution throughout the Eastern Seaboard. Scholler Chemicals (moved from Philadelphia, Pa.), National Fiberstok Co. (moved from Philadelphia, Pa.).

**Welcome**  
TO ALL

A great welcome is extended to any and all good and reliable industries. Our people would be happy to have you and we have very fine people.

**Sites Zoned**  
OFFERING  
COMPLETE  
FACILITIES

An excellent job has been done concerning zoning certain areas for industrial use. We have ample sites at a reasonable price, and we now have a 10,000 acre Industrial Park immediately adjacent to the City limits with water, sewerage and railroad facilities.

**Financial  
Institutions**

We have the Peoples Bank and Trust Co., the First Federal Savings and Loan Assn., and the Hammonton Savings and Loan, with combined assets of over 32 millions of dollars.

**Water Supply**  
UNLIMITED

Ideally situated on a large natural watershed, water in any quantity is available. The City maintains artesian wells supplying an unusually soft water, and adjacent to Hammonton the State recently purchased the Hugh Wharton estate insuring an ample water supply for decades to come.

**Electric Power**  
AMPLE FOR  
ANY DEMAND

The Atlantic City Electric Company supplies all Southern New Jersey with abundant, cheap power. With three generating stations and another under construction, ample power is available for any conceivable demand.

**Natural Gas**  
ANY QUANTITY  
DESIRED

The South Jersey Gas Company supplies natural gas to most sites in this area and would be available for any need. Suburban Propane Nat Gas Company of New Jersey and the Propane Gas Co. supplies tank gas in any quantity desired. Both having headquarters in this area.

**Sewerage**  
EXPANDING  
WITH GROWTH

The City maintains the Sewerage system which is being constantly increased to serve a growing population.

**Education**  
MODERN AND  
PROGRESSIVE

Hammonton has elementary schools both Public and Parochial, also High Schools, both Public and Parochial. The Board of Education has recently erected a Vocational Agriculture School. Hammonton has Churches representing practically every Faith, Catholic, Protestant and Jewish. Recreational facilities are abundant for the children. Both High School fields are available for sports. A wonderful Park with an excellent bathing beach, picnic tables, etc. Also, the Little League has its own field at the Park, and the team was the World Champions in 1949. Two school Auditoriums, V.F.W. Hall, the Moose Hall and the Firemen's Hall are all available for frequent dances for the younger generation.

**Good Living**

The people of Hammonton are honest people accustomed to an unusually high standard of living. Over 90% own their own homes, and they take pride in them. They are a nice, friendly people ready to welcome new friends.

# modern facilities

## H<sup>2</sup>O

The Water Department is operated as a separate entity, Managed by three Commissioners and is self supporting.

The Department started operating in 1902 and at present serves approximately 2300 Consumers through 28 miles of pipe ranging from 2" to 12" mains.

The Water is pumped from 3 wells (artesian), well depth 315' — with a 43' idle and a 67' working depth from surface to water level. The water is pumped electrically by 1 - 50 H.P. Motor and 2 - 75 H.P. Motors, turbine type and supported by a standby auxiliary gasoline engine. The amount of water pumping capacity for the 3 electric pumps is 2200 gallons per minute. These pumps can be operated either automatically or by manual controls. The water is pumped into a 300,000 gallon storage tank where it is aerated and it then feeds the water mains by gravity.

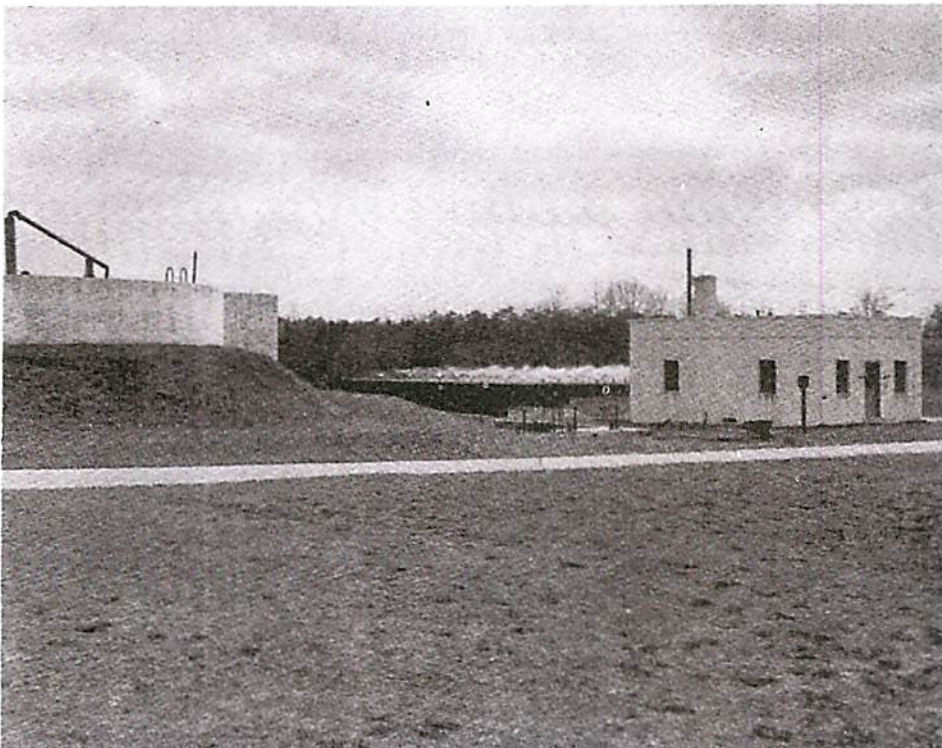
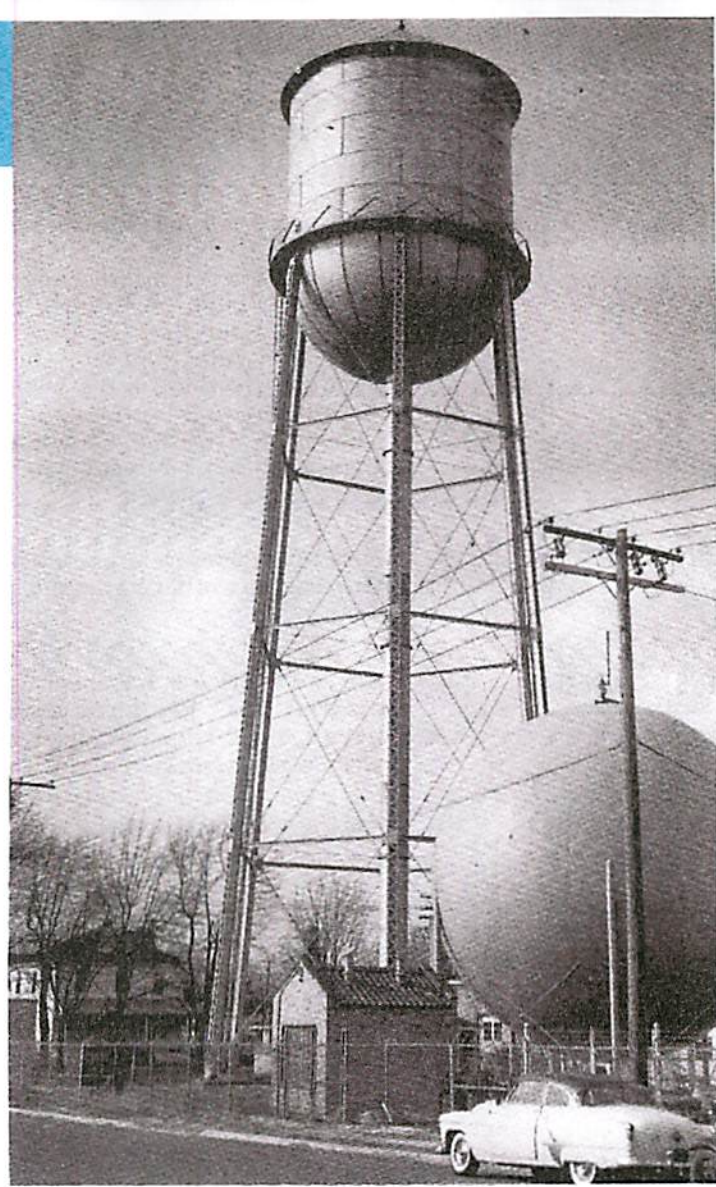
The water pressure is a Mein 62 lbs. starting its journey to the mains from a height of 150 feet to top of tank.

The amount of water pumped in 1955 - 306,848,000 gallons, highest month July 1955 - 44,978,000 and our lowest month October 1955 - 19,625,000.

The above figures do not in any way tax our pumping capacity since we can, with our system, almost double capacity.

Chemical Analyses of water Sample: State Department of Health, 5-11-55:

Nitrogen as:		Chlorides	7.0
Free Ammonia	.020	P H	5.6
Alfuminoid Ammonia	.040	Total Solids	50
Nitrites	.004	Appearance on	
Nitrates	0.24	Ignition	SLT. CHAR
Color	0	Alkalinity to P H 4.0	5.0
Odor (cold)	0	Hardness, Total	38.0
Turbidity	0	Oxygen Consumed	0.4
Iron	0.30	Manganese	.01



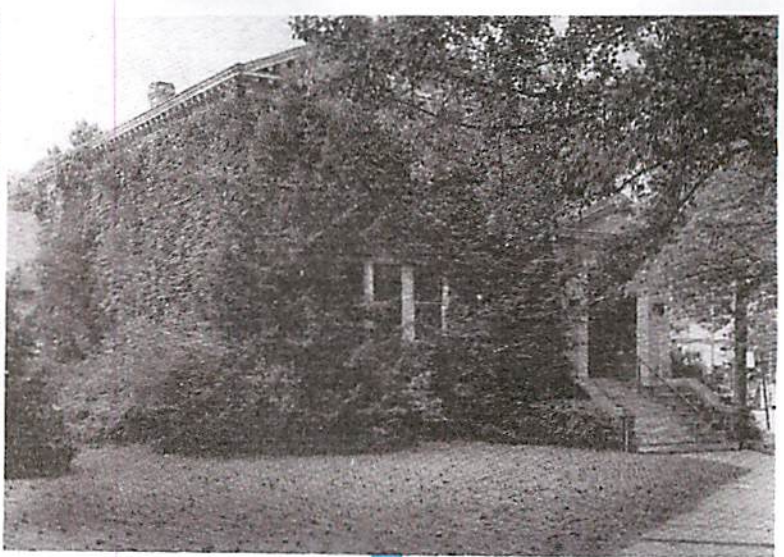
Hammonton Sewerage Disposal Plant was constructed in 1914, reconstructed and modernized in 1939.

It's collection lines consist of approximately 15 miles of 8", 10", 12" and 15" pipe which collects sewage from approximately 1700 homes. Sewage runs gravity to sewerage plant where it is treated in accordance with the New Jersey Board of Health requirements.

Sewerage plant is of modern design and is equipped to carry an approximate load of 750,000 gallons per day.

At the present time, the plant averages about 600,000 gallons per day, considerably less than its capacity.

The Town owns sufficient land adjacent to the sewerage plant to provide for expansion of its present facilities whenever required.



### **Hammonton Fire Co.**

Consisting of two strategically located fire halls and an organization of 65 active members, all equipped with monitor radios in their homes.

They have kept fire losses to a minimum and rendered many varied services to the community with a fine rescue squad and the five radio equipped fire apparatuses.



**U. S. POST OFFICE**

### **The Public Library -**

containing a complete list of books numbering over 6000, of all categories, boasting a membership of 2314 people.

The Library is active in holding monthly book discussions. Hammonton's historical material is preserved here in fire resistant cabinets.

The Library is very modern and fulfills the educational need of all.



### **The New Town Hall Building**

is a modern structure in design with two floors.

This building was planned to provide adequate facilities for each Department of the Town for their immediate requirements and for the next 50 to 75 years, taking into consideration the expected growth in population.

The various departments located in this building include the offices of Town Clerk; Tax Collector and Treasurer; Welfare Director; Police Department; Communications Service; Health Clinic; Council Chambers and Municipal Court; Judges Chambers; Court Clerk, including also, Jail Cells.

# utilities

## Atlantic City Electric Company Makes Possible **Unlimited Electric Power**

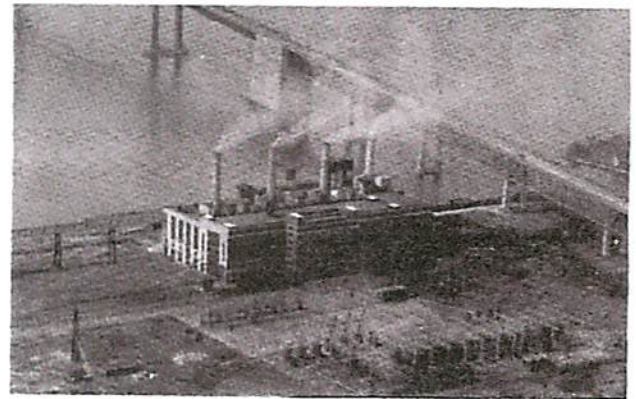


HAMMONTON'S NEW ELECTRIC COMPANY  
SERVICE CENTER

Incorporating Latest Facilities, Assuring All of Its Customers of  
Competent Maintenance.



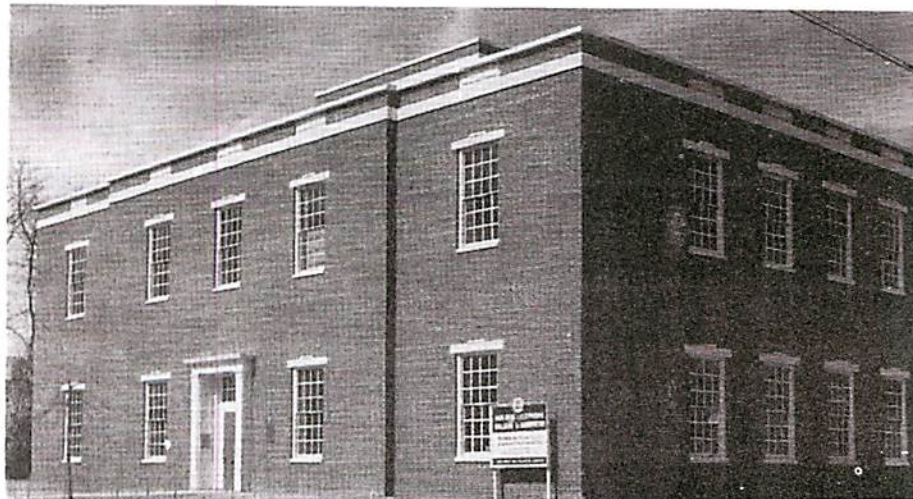
MISSOURI AVENUE GENERATING STATION  
CAPACITY 94,500 KW



DEEPWATER GENERATING  
STATION - CAPACITY 138,000 KW

## **TELEPHONE...**

AS WITH ALL OTHER PHASES OF ENDEAVOR HAMMONTON HAS BEEN PROGRESSIVE WITH ITS COMMUNICATIONS. PICTURED HERE IS THE NEW DIAL TELEPHONE BUILDING OF THE NEW JERSEY BELL TELEPHONE COMPANY.



Just as Hammonton is at the hub of Southern New Jersey, it is at a central point in the Atlantic City Electric Company system. It serves the southern one-third of the state, roughly from Paulsboro and Barnegat Light to Cape May.

The Company serves 377 communities with over 525,000 population in the territory of 2,700 square miles.

Transmission lines of 138 KV connect the three generating stations and feed the network of more than 5,000 miles of pole lines. Generating stations are at Deepwater, Greenwich, and Atlantic City, totaling 318,000 KW capacity.

This affords Hammonton a looped service with power being supplied by generating stations both to the east and west.

Atlantic City Electric Company is also interconnected with the Pennsylvania-New Jersey-Maryland power pool.

Industrial customers of Atlantic City Electric Company account for more than 400 million KWH or about one-third of the Company's 1956 production.

## **SOUTH JERSEY GAS COMPANY**

With 1226 miles of main throughout Southern New Jersey linked to the natural gas lines of Transcontinental Gas Pipe Corporation, South Jersey Gas Company has a maximum daily sendout of over 20 million cubic feet. A staff of 440 trained personnel, modern equipment and a keen interest in the area, give assurance of dependable, trouble-free service.



gas

### **PROPANE GAS**

FURNISHED BY TWO OF THE FINEST COMPANIES FOR INDUSTRIAL USES, HEATING AND MANY RESIDENTIAL SERVICES. HUGE INSTALLATIONS ALSO HAVE BEEN MADE FOR USES BEYOND MAIN.



## **PROPANE GAS COMPANY**

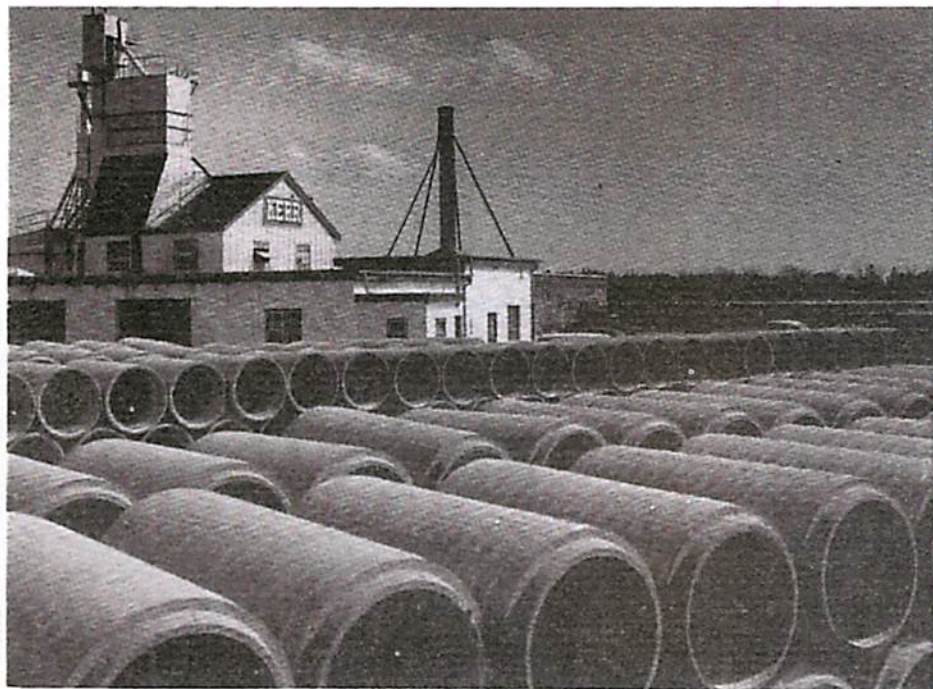


## **SUBURBAN GAS CORP.**



## WILLIAM B. KESSLER, INC.

PRODUCES 125,000 HAMMONTON PARK SUITS PER YEAR. THE FIRM EMPLOYS 520 PERSONS, AND HAS ENJOYED CONSTANT EXPANSION SINCE ITS ORIGIN HERE IN 1923.



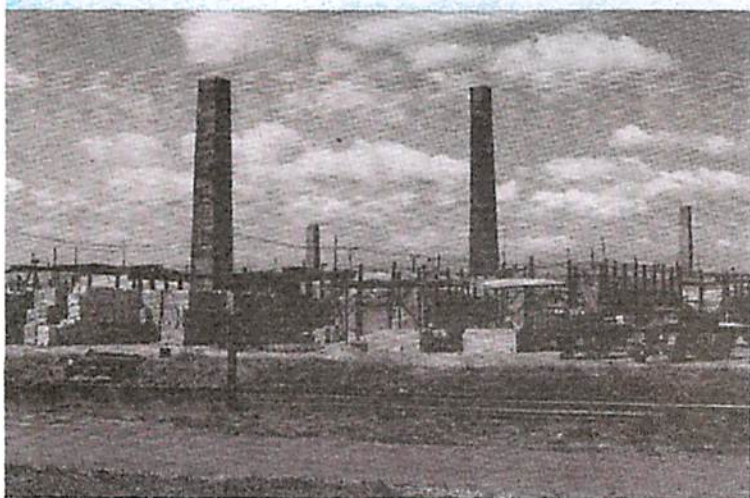
## SOUTH JERSEY CONCRETE PIPE COMPANY, INC. (NEW)

MANUFACTURING SEWER AND CULVERT PIPE FOR ANY TYPE OF DRAINAGE WORK IN DIAMETERS FROM 6 INCHES TO 6 FEET.

SERVING THE EXPANDING DELAWARE VALLEY MARKET HAS MADE POSSIBLE STEADY EMPLOYMENT OF 40 PEOPLE.

# Industry IS HERE TO STAY . . .

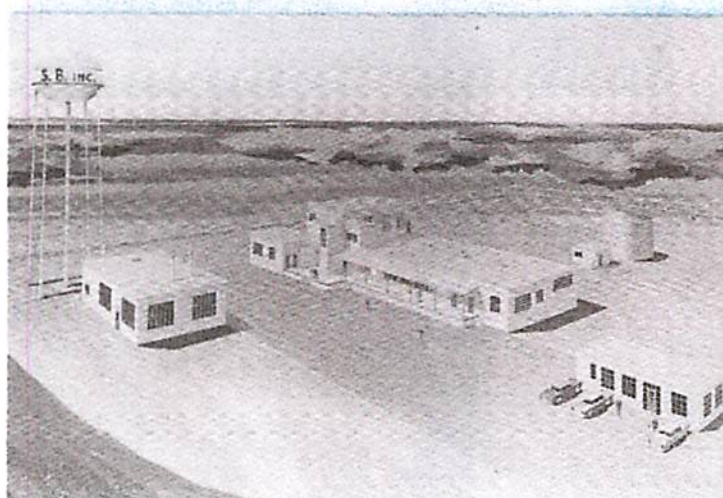
PICTURED HERE ARE A FEW OF THE PROGRESSIVE INDUSTRIES THAT WOULD WELCOME TO HAMMONTON ANY NEW NEIGHBOR. REPRESENTING A SUCCESSFUL TESTIMONY OF THIS PRIME LOCATION AS A NATURAL MARKET FOR ALL TYPES OF ENDEAVOR.



## ALLIANCE CLAY PRODUCT COMPANY (NEW)

MANUFACTURERS OF BEAUTIFUL BUFF AND GREY BRICKS, EMPLOYING FIFTY-FIVE PERSONS AND MAINTAINS A \$250,000 PAYROLL PER YEAR.

PRODUCTS ARE SHIPPED TO ALL PARTS OF THE NATION.



## SCHOLLER BROTHERS, INC. (NEW)

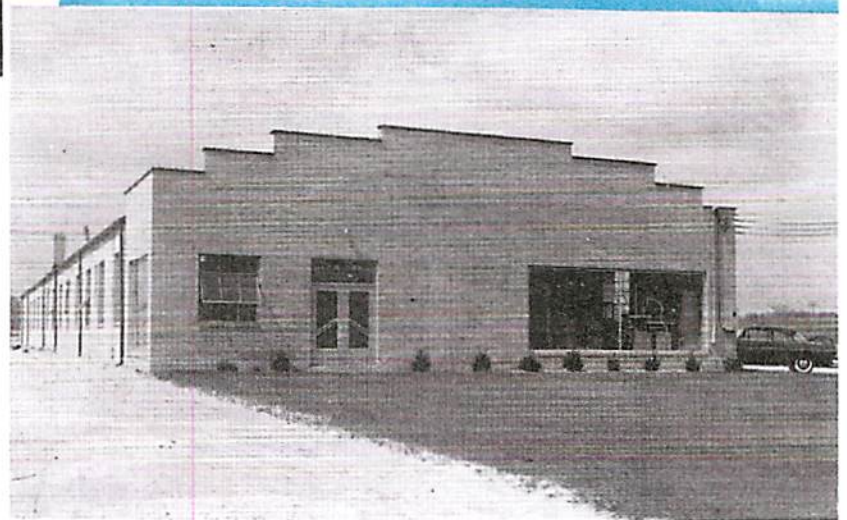
MANUFACTURERS OF TEXTILE SOAPS, SOFTENERS, FINISHES AND SPECIALITIES . . . PICTURED HERE IS THEIR NEW PLANT LOCATED AT ELWOOD - WEYMOUTH ROAD WHICH COMPRISES AN ADDITION TO THEIR CANADIAN AND PHILADELPHIA PLANT FACILITIES.

## WILLIAM B. KESSLER, INC.

PRODUCES 125,000 HAMMONTON PARK SUITS PER YEAR. THE FIRM EMPLOYS 520 PERSONS, AND HAS ENJOYED CONSTANT EXPANSION SINCE ITS ORIGIN HERE IN 1923.

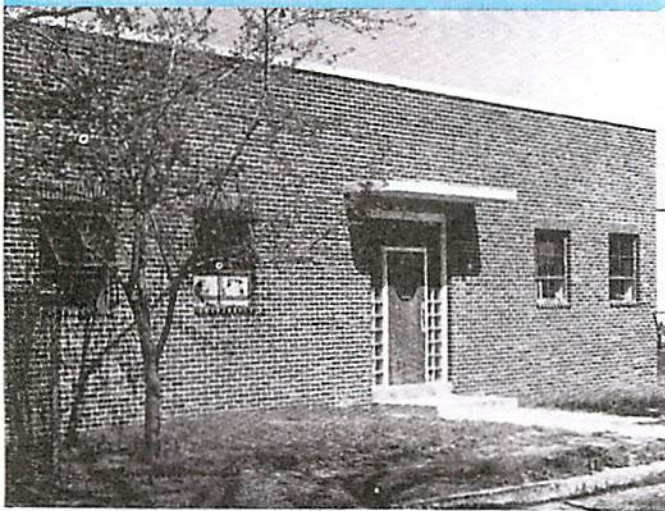
## DEER PARK BAKING CO. (NEW)

WHOLESALE MANUFACTURERS OF SCANDINAVIAN TYPE COOKIES — EMPLOYS 90 PERSONS AND SUPPLY THE NEARBY METROPOLITAN AREAS WITH THEIR DELICIOUS PRODUCTS.



## WOODBURN BAKING CO., INC. (NEW)

PRODUCERS OF HOME STYLE ARCHWAY COOKIES. EMPLOYING 20 PEOPLE AND SERVING NEARBY DISTRIBUTORS WITH A FINE WHOLESOME PRODUCT.



## RAYNOR DOOR CO. (NEW)

THE RAYNOR DOOR CO. MOVED INTO ITS HANDSOME MODERN PLANT IN NOVEMBER 1954. THROUGH EFFORTS OF THE CHAMBER OF COMMERCE AND CITY,



RAYNOR EXPANDED ITS OPERATION TOWARD HAMMONTON. IT HAS NOW TAKEN LEADERSHIP IN THE OVERHEAD DOOR FIELD, PROVING THE MARKET POTENTIAL OF THIS AREA.



TO- NEW YORK  
TRENTON

EMERSON  
TO-N.J. TURNPIKE

TO-GAR

# HAMMONTON

NEW JERSEY

TO  
PHILADELPHIA

READING R.R.

30

30

13

47

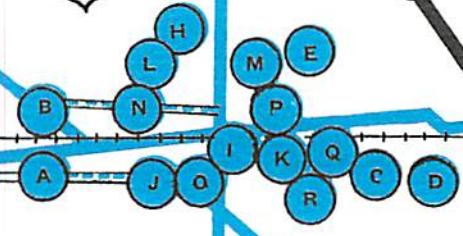
TO-  
WASHINGTON  
WILMINGTON

BALTO.

U

PENNSYLVANIA READING SEASHORE LINES

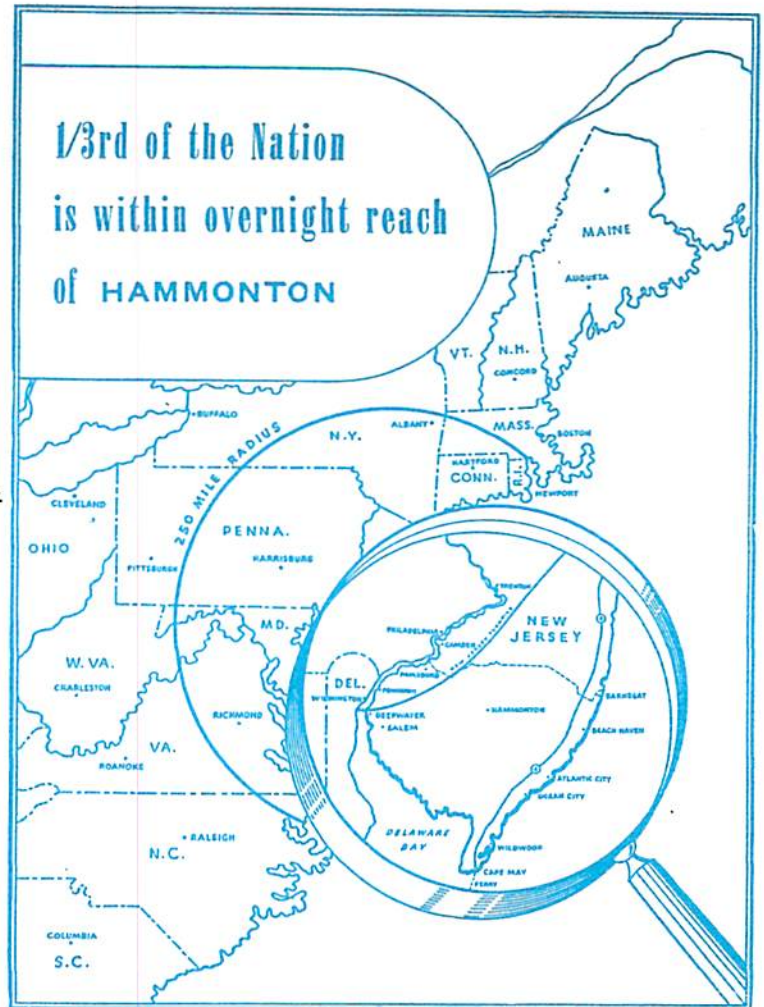
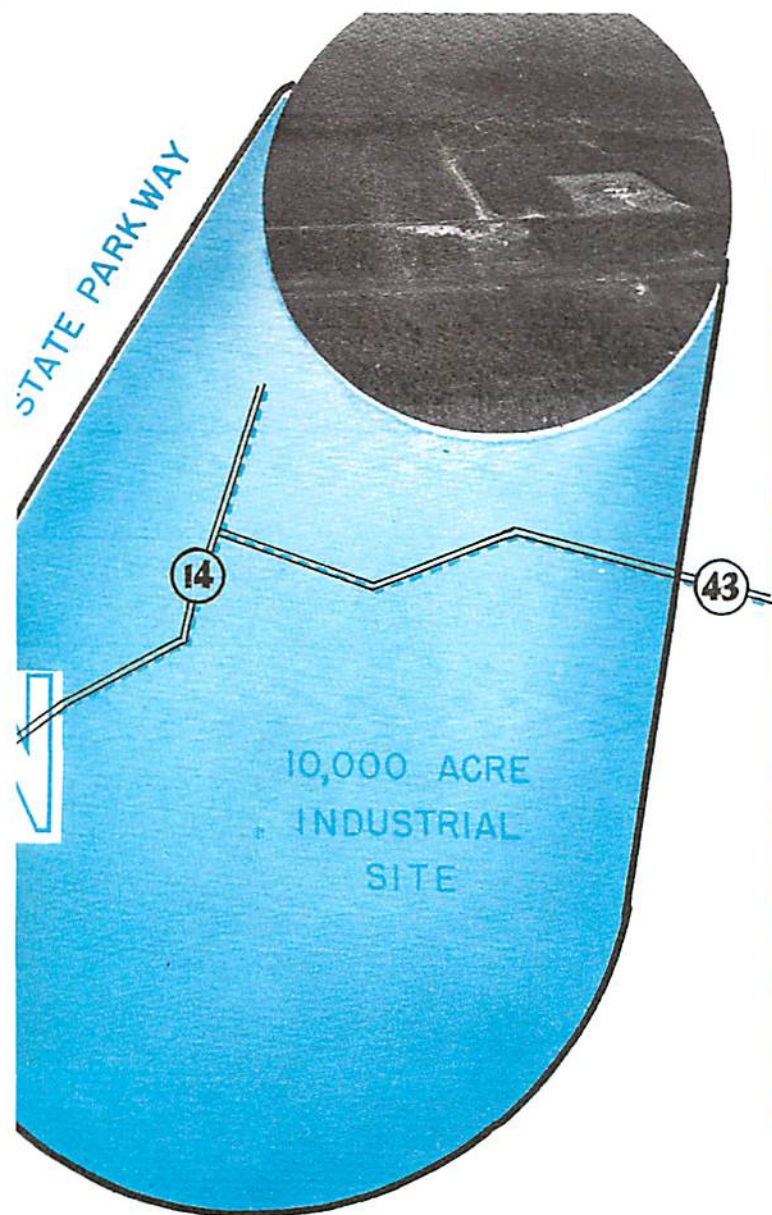
54



CENTRAL R.R. OF N.J.

322

CAL



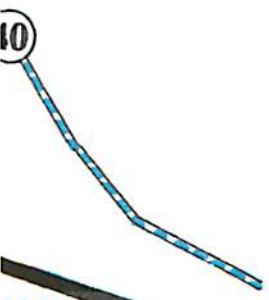
TO ATLANTIC CITY



LVANIA READING SEASHORE LINES

### LEGEND

- |          |  |          |   |
|----------|--|----------|---|
| <b>A</b> | ALLIANCE CLAY PRODUCTS (Bricks — Alliance, Ohio) | <b>K</b> | ALPHA MFG. CO. (Ladies Dresses)               |
| <b>B</b> | EASTERN BEVERAGE CORP. (Holland Beer)            | <b>L</b> | BEL SPORTSWEAR, INC. (Ladies Sportswear)      |
| <b>C</b> | RAYNOR MFG. COMPANY (Overhead Doors)             | <b>M</b> | C. & P. COAT COMPANY (Ladies Coats)           |
| <b>D</b> | DEER PARK BAKING CO. (Scandinavian Cookies)      | <b>N</b> | A. D. S. CLOTHING CO., INC. (Men's Trousers)  |
| <b>E</b> | WOODBURN BAKING CO. (Cookie Specialties)         | <b>O</b> | CROWN PANTS COMPANY (Men's Trousers)          |
| <b>F</b> | SCHOLLER CHEMICAL CO. (Chemicals)                | <b>P</b> | J. & H. PALMA CO. (Ladies Dresses)            |
| <b>G</b> | NATIONAL FIBERSTOK CORP. (Envelopes)             | <b>Q</b> | T. MELTZER (Ladies Skirts)                    |
| <b>H</b> | WM. B. KESSLER CO. (Hammonton Park Suits)        | <b>R</b> | JACOBS MFG. CO. (Men's Trousers)              |
| <b>I</b> | JOS. R. PALMA, INC. (Ladies Apparel)             | <b>S</b> | MODERN CLOTHING CO. (Ladies Skirts)           |
| <b>J</b> | AGGRESSIVE COAT CO. (Ladies Coats)               | <b>T</b> | HAMMONTON MFG. CO. (Men's Clothing)           |
|          |  | <b>U</b> | KERR CONCRETE PIPE CO. (Sewer and Water Pipe) |

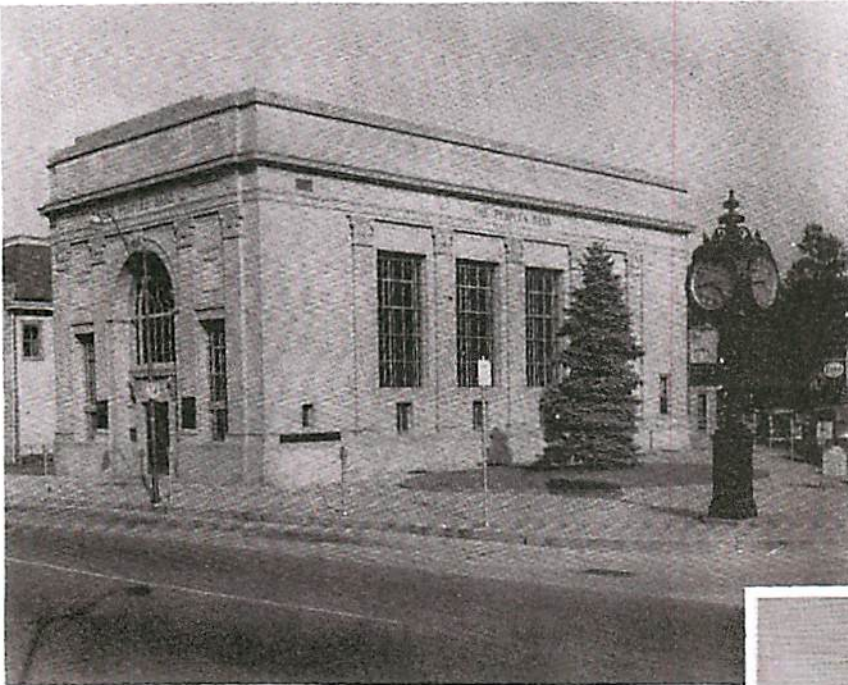


MAY

A R E A M A P



# Financial Institutions



Peoples Bank and Trust Company has served the Community with complete banking facilities since 1887.

Resources \$9,750,000.00 now the largest Bank on the mainland of Atlantic County.

In this fast growing area, the Bank has kept pace with the times by enlarging its present quarters, and proposes to establish a Drive-In Branch Office, White Horse Pike, in the north section of Town in order to furnish the Town with adequate Modern Banking Service.

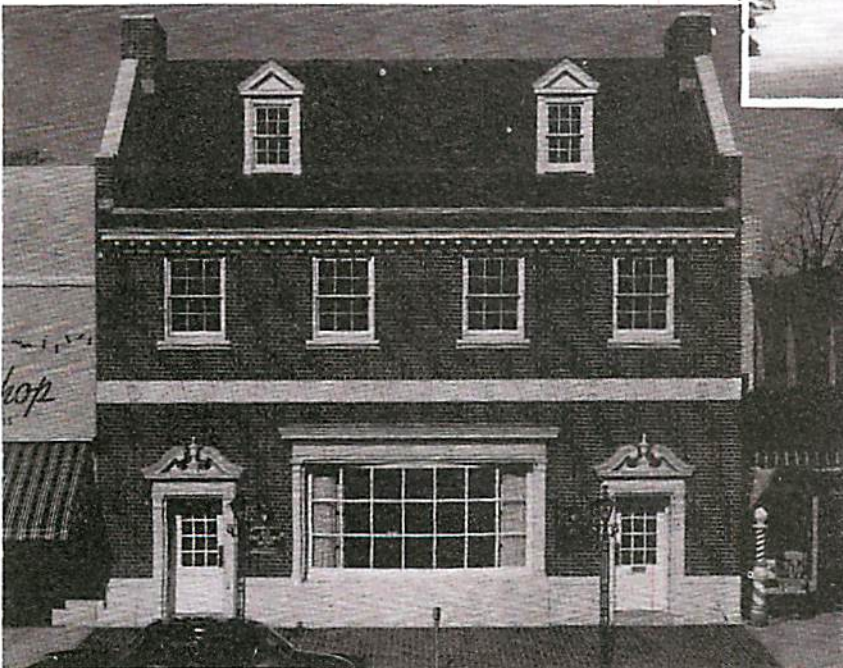
Hammonton Savings and Loan Association organized in 1871 . . .

Has been serving the Hammonton area for 85 years

Has been encouraging thrift and debt-free ownership in Hammonton and surrounding towns

Assets at December 31, 1956 were \$5,800,000.00

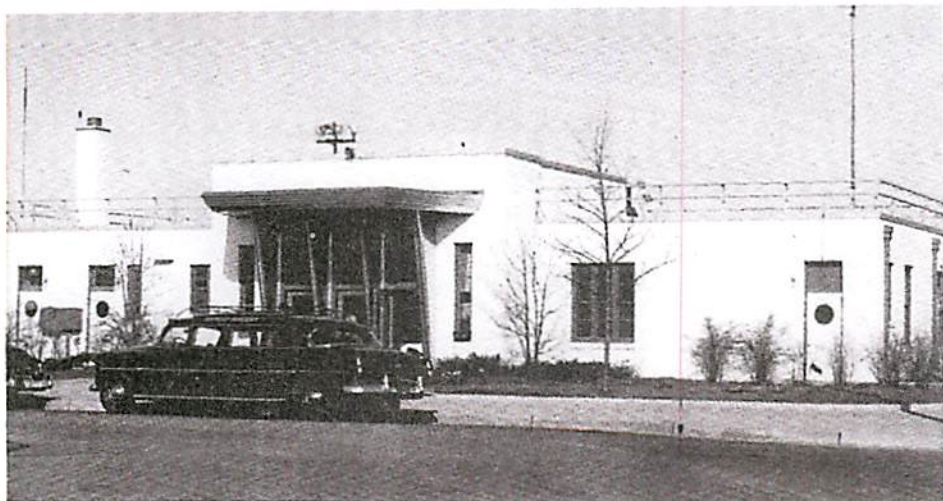
Provides complete savings and loan services including savings accounts and all types of home mortgages.



First Federal Savings and Loan Association of Hammonton, with assets of more than \$9,500,000.00, is the largest Savings and Loan Association in Atlantic County.

Now in its 82nd year, the insured savings of its members have more than doubled in the past 3½ years, making First Federal the fastest growing financial institution in this area.

The high rate of savings enables the Association to assist residents of Hammonton and South Jersey in the purchase or construction of their homes.



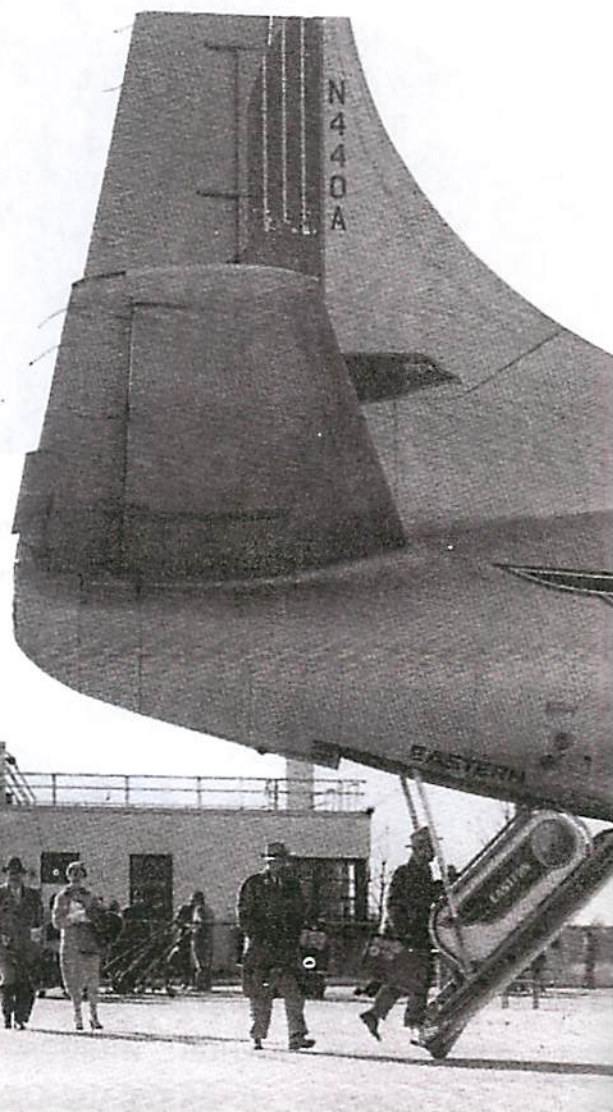
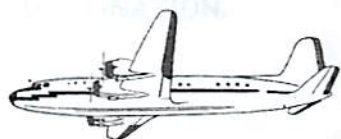
**Typical Depot Facilities  
For Bus and Air Travel**

SHOWN HERE IS THE POMONA AIRPORT DEPOT . . . ONLY 20 MINUTES FROM CENTER CITY AND CONNECTS TO ANY PART OF THE NATION.

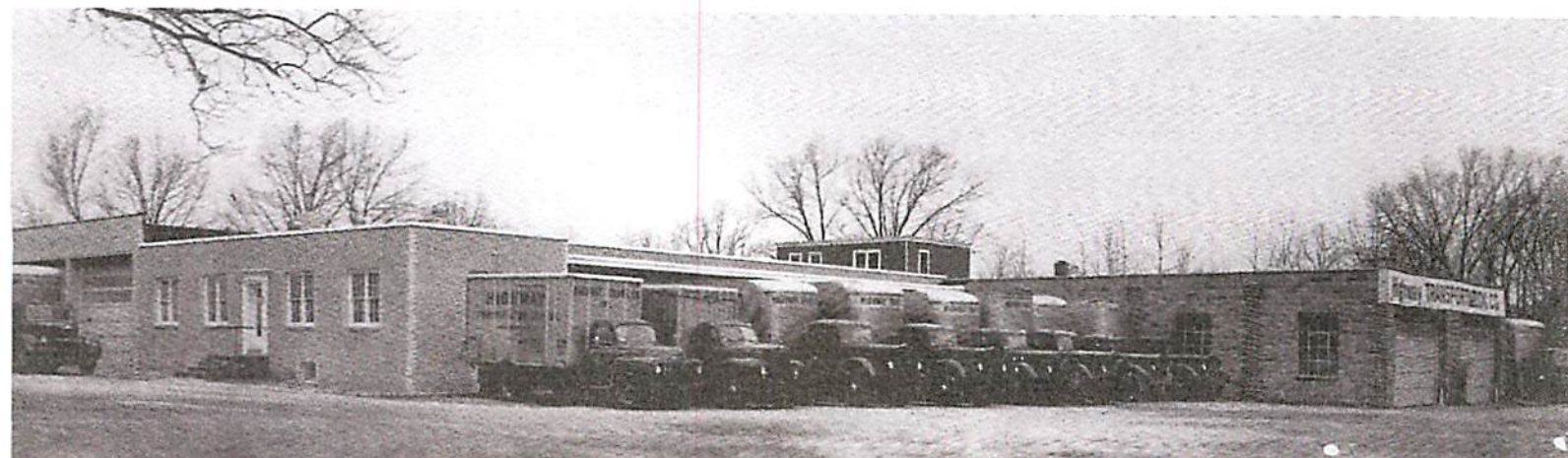
**Truly The CENTER For RAIL . . . HIGHWAY . . . AIR**

**-TRANSPORTATION-**

THREE GREAT AIRLINES HAVE CHOSEN THIS AREA FOR THEIR FREIGHT AND PASSENGER SERVICE SCHEDULED FLIGHTS



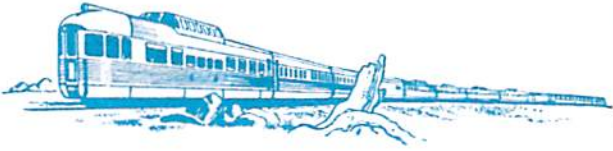
HUGE QUANTITIES OF ANY MANUFACTURED PRODUCT CAN BE DELIVERED OVERNIGHT TO MORE THAN ONE-THIRD OF THE NATION.



## SUPERB RAILROAD FACILITIES

H A M M O N T O N —  
THE HUB OF SOUTH JERSEY'S  
RAILWAY SYSTEM —

A SHIPMENT . . . CARLOAD OR  
TRAINLOAD MAY BE SWITCHED  
AT WINSLOW JUNCTION  
TO ANY DESTINATION.



The Hammonton industrial area is served by the Pennsylvania - Reading Railroad, Reading Company, and Central Railroad of New Jersey. Assuring the producers of all classes of commodities fast economical transportation to all metropolitan areas.

## HIGHWAY TRUCKING FACILITIES

PICTURED HERE IS ONE OF MANY TYPICAL CARRIER FACILITIES AVAILABLE.

### Highway Transportation Company



FURNISHES DIRECT SERVICE BETWEEN SOUTH JERSEY, PHILADELPHIA  
AND NEW YORK . . . LARGE FLEETS OF MODERN HIGHWAY TRANSPORT  
TRUCKS ARE HOUSED HERE AT THEIR HEADQUARTERS IN HAMMONTON.

HUGE QUANTITIES OF ANY MANUFACTURED PRODUCT CAN BE DELIVERED  
OVERNIGHT TO MORE THAN ONE-THIRD OF THE NATION.



# agriculture

## AGRICULTURE IN HAMMONTON

Hammonton is the largest agricultural center in Atlantic County. The area includes part of Camden County since Hammonton is the marketing and shopping center for farmers across the line. Practically every farm has a complete irrigation system and can cover the entire farm acreage with water. No other section of the country has a higher percentage of irrigated land than the Hammonton section does. The source of water includes deep wells, specially constructed and dug irrigation ponds, and natural streams.

The principal crops of the area are sweet potatoes, blueberries, strawberries, tomatoes, peaches and apples. Also there is a considerable acreage in blackberries, raspberries, grapes, and miscellaneous vegetables. The world's largest blueberry farm is located in the Hammonton area and is owned and operated by the Galletta Brothers. Several other blueberry farms in the area are almost as large. The largest sweet potato farms in the State are located in Hammonton, and the largest strawberry acreages are located here also. Sweet potatoes produced in this area occupy more acres than any other crop. The annual acreage runs around 5,000 acres and the annual income can

usually be expected to amount to at least two million dollars. Hammonton pioneered in the development of the high humidity sweet potato storage. The first building ever constructed for high humidity sweet potato storage was built by the Fruit Auction Association in 1947. Since that time there have been numerous storages of this type constructed here. Total holding capacity in these special storages in the area exceeds one-quarter million bushels.

Blueberries are the principal fruit crop produced here. Approximately 3,500 acres are devoted to this crop. Most of the berries are marketed through the Hammonton Auction which sells a million or more dollars worth of fruit each year. In addition to this the growers sell a large volume of their berries to processors and to other outlets. The government blueberry testing farm for New Jersey and the Northeast is located in the Hammonton area. From it are coming new varieties which are making cultivated blueberries such a popular food item.

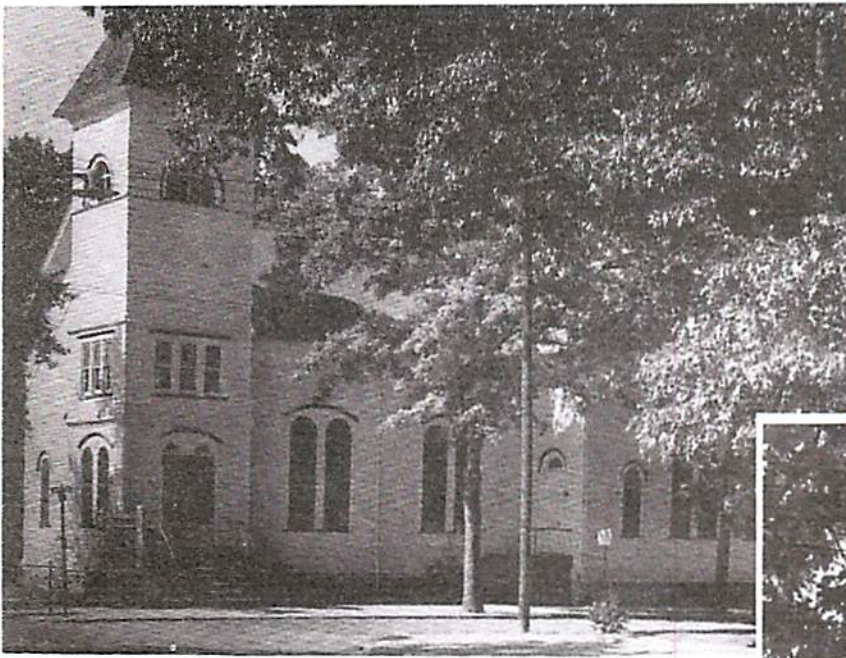
Hammonton is considered as the strawberry center of the State. The acreage in strawberries does not vary greatly from year to year and usually runs between 1,000 and 1,500 acres. The finest quality fruit produced anywhere is found in the Hammonton section.

Tomatoes are the second largest vegetable crop produced here. Most of the growers market a considerable tonnage as fresh fruit early in the season and then put the balance of their crop into can-houses. Total acreage for the area amounts to somewhere around 2,500 acres with the average yield, including market tomatoes, running well above the State average. Many growers harvest twenty or more tons per acre while the State average is considerably below ten tons per acre.

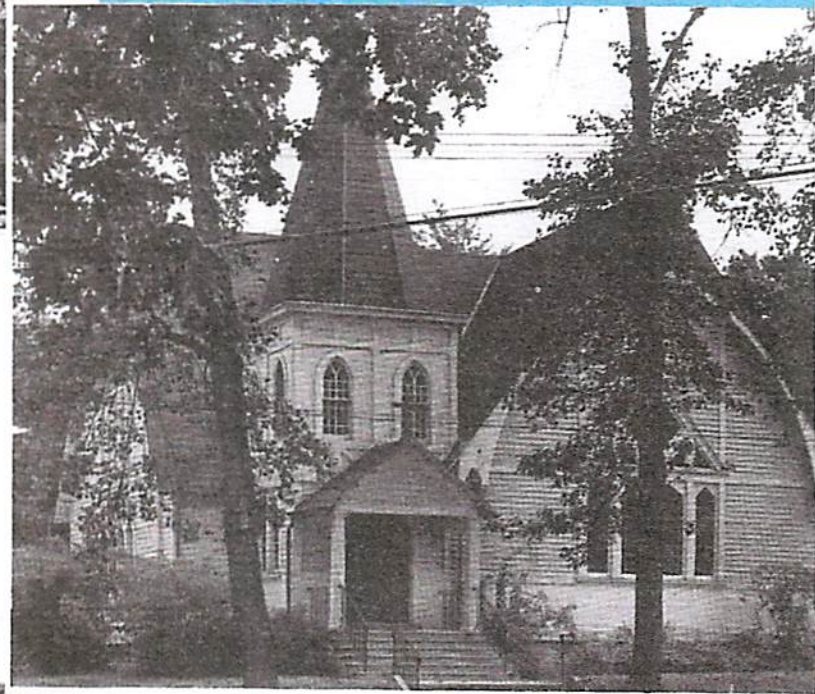
Total agricultural production in the Hammonton area is estimated at approximately \$10,000,000.00 per year.



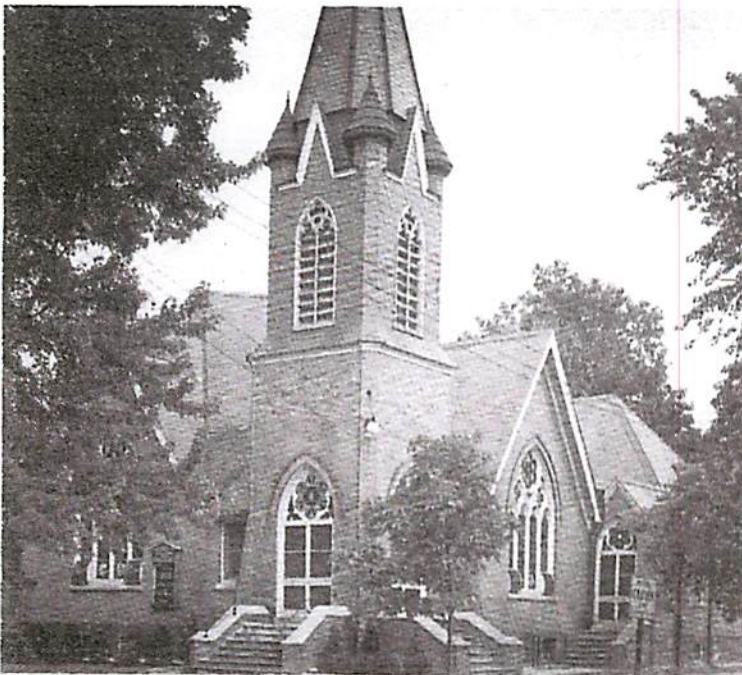
*A PLACE FOR  
EVERY  
FAITH...*



FIRST BAPTIST CHURCH



ST. MARK'S EPISCOPAL CHURCH

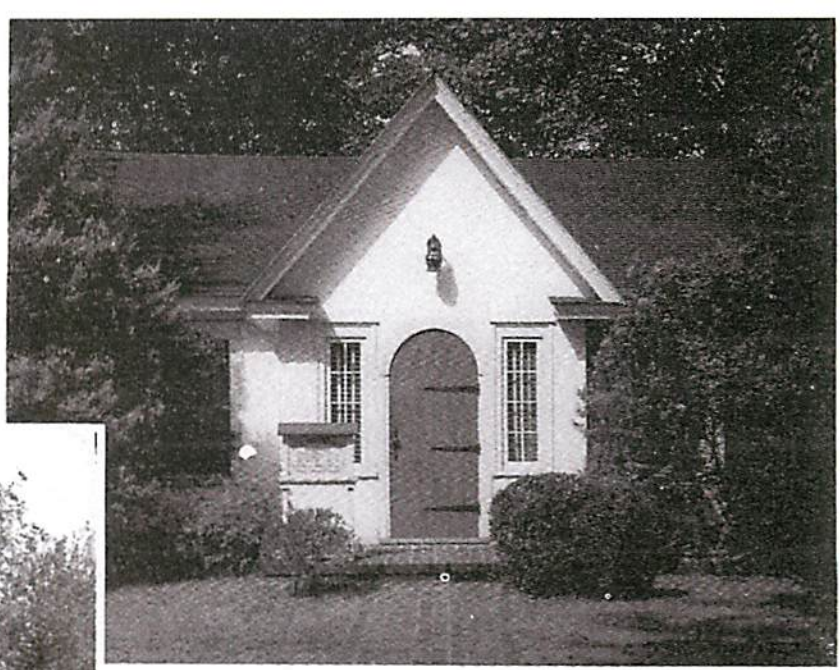


FIRST PRESBYTERIAN CHURCH

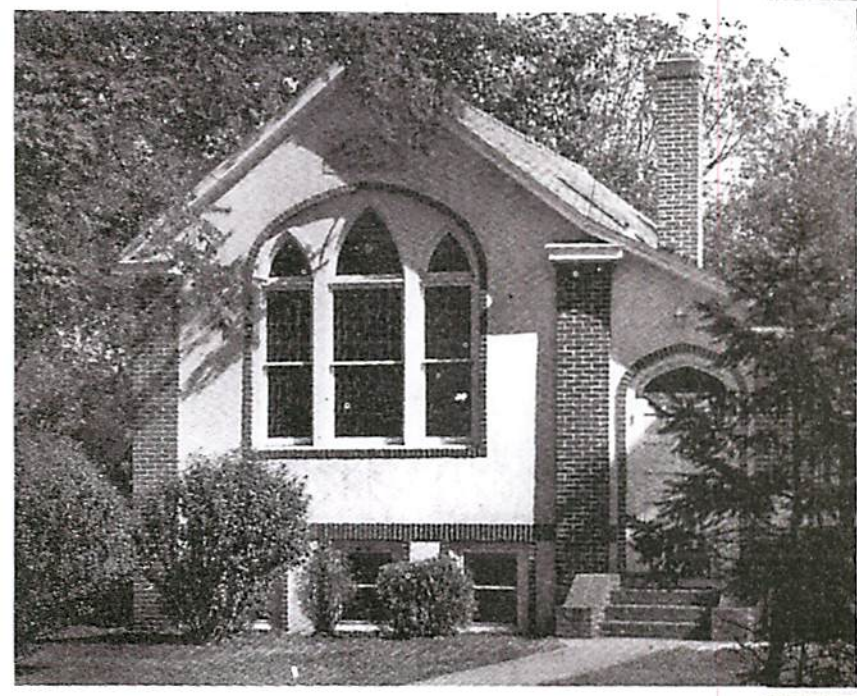


ST. JOSEPH'S ROMAN CATHOLIC CHURCH

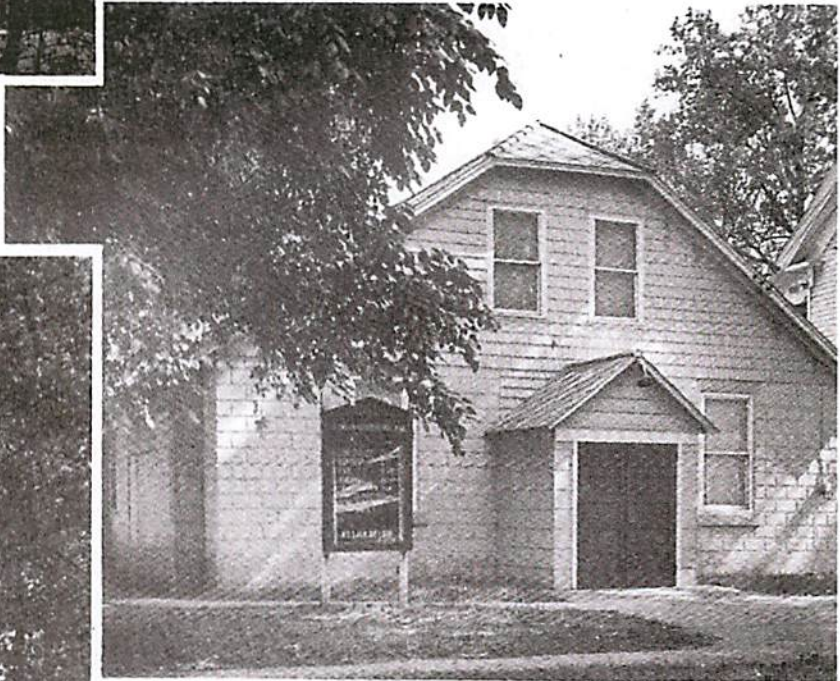




FIRST CHURCH OF CHRISTIAN SCIENCE



TEMPLE BETH-EL

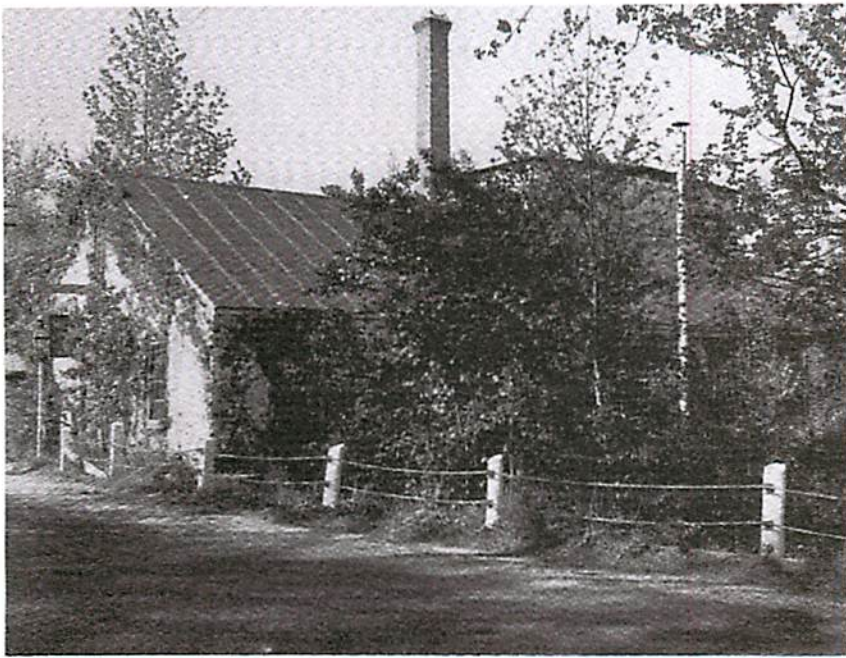


THE PENTECOSTAL TABERNACLE  
ASSEMBLIES OF GOD



FIRST METHODIST CHURCH



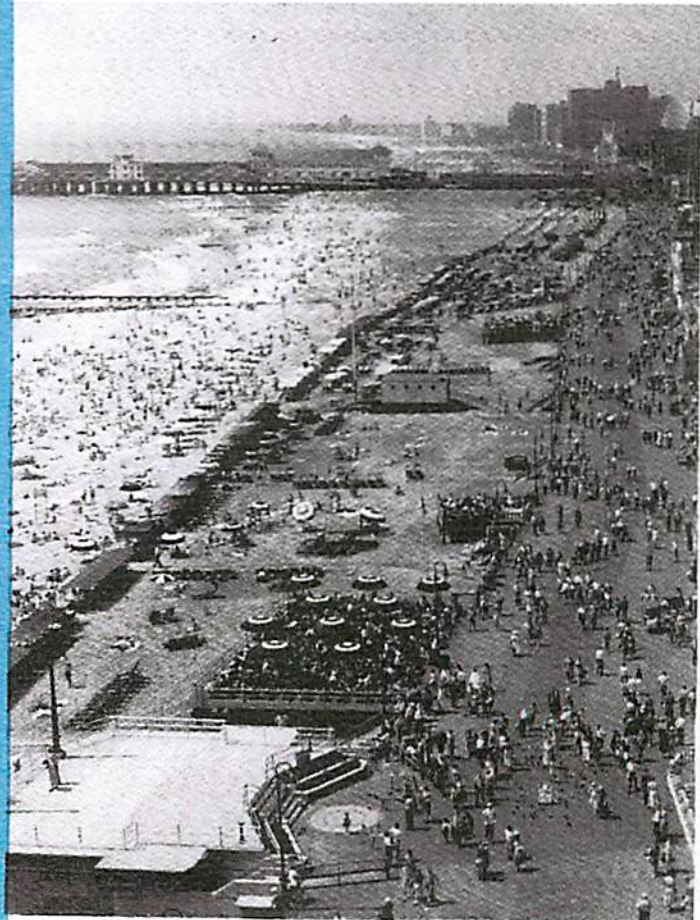
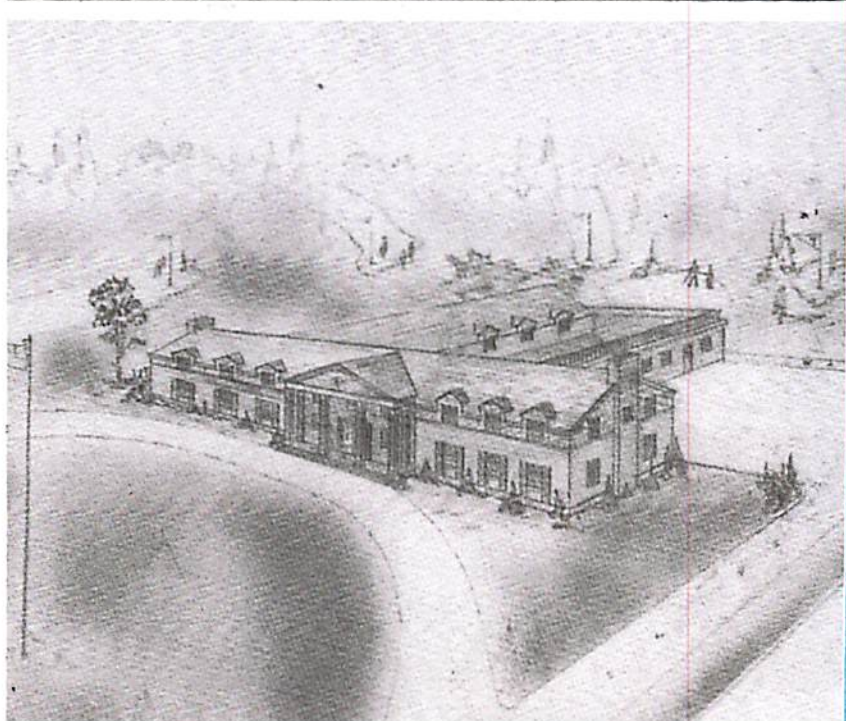


# recre

AMPLE ACTIVITY, BOTH SPECTATOR AND PARTICIPATING FOR ALL AGES ABOUNDS HERE IN THIS PROGRESSIVE AND VERY ACTIVE COMMUNITY.

HAMMONTON HAS ITS OWN NATURAL LAKE, WHERE FISHING, BOATING AND BATHING ARE ENJOYED BY MANY.

BASEBALL FOR THE YOUNG AND OLD, YES OLD TOO FOR HERE A SPIRIT STILL EXISTS FOR COMPETITIVE SPORTS.



# ation

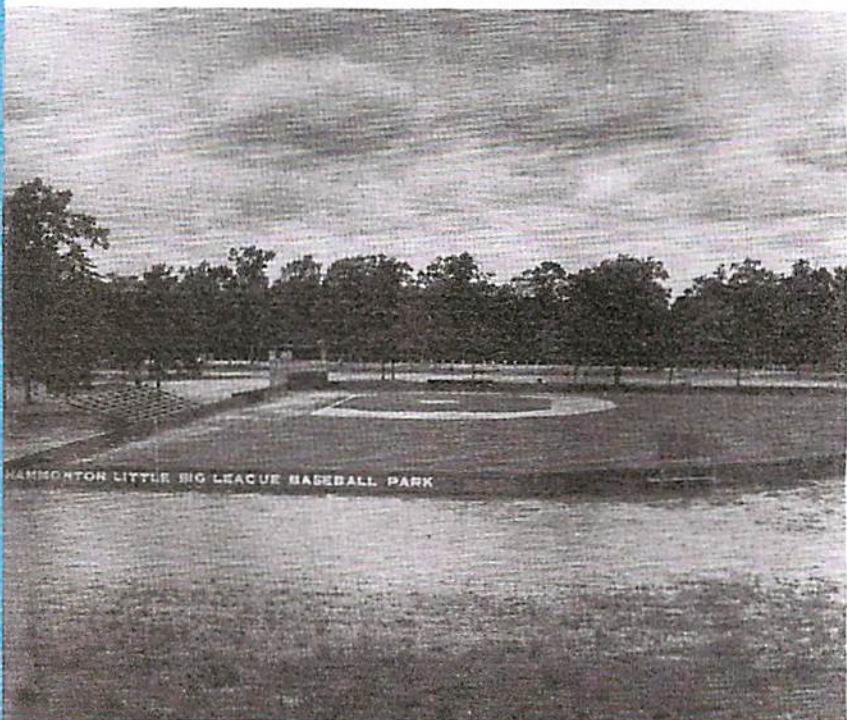
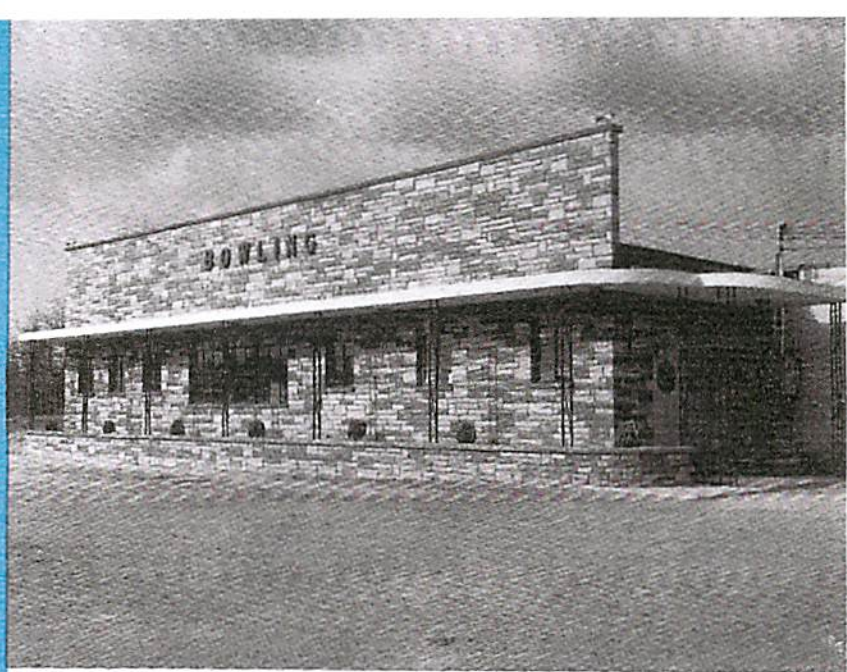


ALSO FOR THE GOLF ENTHUSIASTS THE BEAUTIFUL BUENA VISTA GOLF COURSE AND NEW CLUB HOUSE OFFERS A CHALLENGE TO THE GREATEST.

BOWLING, THEATRE OR A FINE STAGE PLAY MAY BE ENJOYED AT DIDONATOS BOWLING CENTER, RIVOLI THEATRE OR THE UNIQUE MILL PLAYHOUSE, A TREASURE IN ITSELF. TWO DRIVE-IN THEATRES NEARBY.

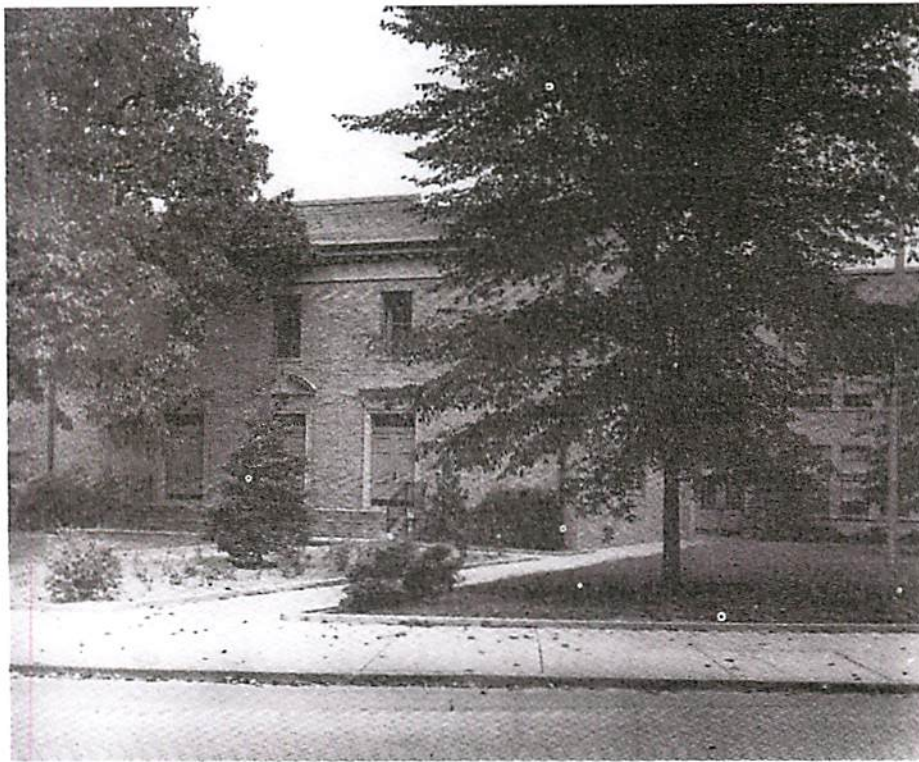
JUST MINUTES AWAY FROM THE FAMED ATLANTIC CITY BOARDWALK, THEATRES, AND BEACH.

THERE IS A RECREATION HERE FOR EVERYONE AND FAR TOO MANY EXIST TO PICTURE THE COMPLETE STORY HERE.

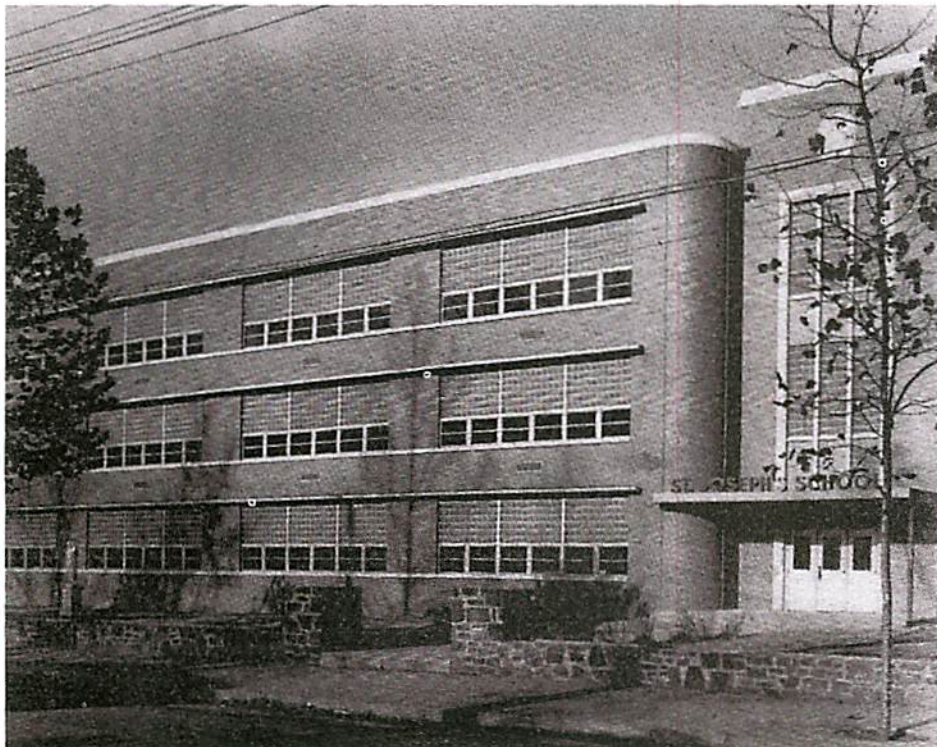


## **Hammonton Schools . . .**

PICTURED HERE IS THE HAMMONTON HIGH SCHOOL BUILDING, ONE OF FOUR FROM KINDERGARTEN TO 12TH GRADE. IT IS ON A SEVEN ACRE SITE, WHICH EMBODIES ALL FACILITIES IN A CENTRAL LOCATION. HERE EVERY MODERN INSTALLATION NECESSARY FOR THE CHILD'S COMPLETE EDUCATION IS CENTRALIZED AND EXPANDED QUICKLY AS HAMMONTON PROGRESSES.



# education



## **St. Joseph's School . . .**

CONSISTING OF CLASSROOMS FOR PRIMARY, ELEMENTARY AND HIGH SCHOOL PUPILS AND EQUIPPED WITH ALL OF THE MODERN NEEDS SO IMPORTANT TO OUR PROGRESSIVE COMMUNITY, SCIENCE LAB, LIBRARY, CAFETERIA AND GYMNASIUM AUDITORIUM. A WELL STAFFED INSTITUTION OFFERING A FULL CURRICULAR PLUS A WIDE INTERESTING EXTRA CURRICULAR PROGRAM TO FIT ALL STUDENT REQUIREMENTS.

# CHAMBER OF COMMERCE

HAMMONTON, NEW JERSEY  
TELEPHONE LOGAN 1-2600

*The Hub of South Jersey*

## OFFICERS

WILLIAM F. HEARING  
President  
Telephone: Logan 1-2460  
RUSSELL JOHNSON  
1st Vice President  
JOHN A. CAVUTO  
2nd Vice President  
ANDREW MAULE  
Recording Secretary  
EMMETT BUGGEY  
Treasurer

## BOARD OF DIRECTORS

MICHAEL BRITA  
Brita Bros. Shoe Store  
ROBERT LEDDY  
Alliance Clay Products  
THEODORE TRACNER  
Insurance  
JOSEPH FALCIANI  
Hammonton Building Material  
ALFONSO J. GILBERTI  
Peoples Bank and Trust Co.  
DOMENICK PITERA  
Pitera Sign Co.  
NICHOLAS CASHAN  
Cashan Agency  
CARL G. MONASTRA  
Hammonton Cash Market  
SAMUEL CURCIO  
Attorney  
ROBERT SCHENK  
South Jersey Laundry

We trust that you have enjoyed our Summary in this booklet, and have helped you decide to be our neighbor soon.

Pictured here are some of the potential possibilities of our Progressive Hammonton. To tell the full story, would cover many more pages of thrilling activity.

Here among happy surroundings, strategically located, your enterprise is assured of success, and the wholehearted cooperation of all.

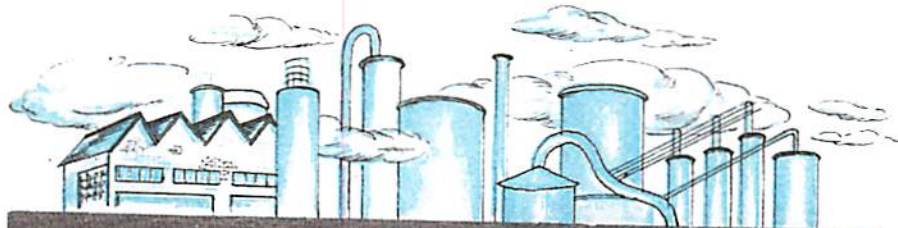
What we cannot picture is the human factor, the aggressive, cheerful pioneering, the will to aid any new venture, which exists among our officials and citizens.

Thank you for your consideration.

Sincerely yours,



The Chamber of Commerce  
Hammonton, N. J.



*Welcome to*  
**HAMMONTON**  
Industrial Sites Available  
*CHAMBER OF COMMERCE*

LILLIAN ON THE LAKE  
TUES. 6:30

MEETING PLACE  
MIDWAY DINER

ALL ABOUT  
MIDWAY

